

BIGGER AND BETTER. REVOLUTIONISE TEXTILE PRINTING.

SURECOLOR SC-F10030/F10030H



Featured printer is F10030H.

PRODUCE LARGER PIECES OF TEXTILES WITH EPSON'S FIRST 76-INCH LARGE FORMAT TEXTILE PRINTER

Introducing Epson's SureColor SC-F10030/F10030H dye sublimation textile printer, where high efficiency, speed and reliability are central to the success of businesses. With new PrecisionCore Micro TFP printheads and an integrated dryer, greater productivity is achieved. Enjoy top-notch print quality as Precision Dot Technology leverages on optimised, new technologies to deliver astounding prints. Built to reduce downtime, a self-repair function and Epson Cloud Solution PORT feature allow users to easily replace specific components on their own for easy and seamless printer fleet management.



IT'S IN THE DETAILS.



EPSON ULTRACHROME
DS INK

Epson Edge Print

EPSON
EXCEED YOUR VISION

A MULTITUDE OF BENEFITS AWAIT

The textile industry is ever-changing and the ability to manufacture unique printed textiles on a short production run is quickly becoming a business advantage. From delivering unparalleled productivity, to producing nothing less than spectacular print quality, Epson's SC-F10030/F10030H helps evolve and advance your business, taking it to the next level.

The Epson SC-F10030 comes with 4 standard colours: Cyan (C), Magenta (M), Yellow (Y) and Black (K). On the other hand, the SC-F10030H comes with 2 additional ink options for a greater print vibrancy and an expanded print application. You may choose either the Fluorescent Yellow and Fluorescent Pink (FY/FP) configuration, or the Light Cyan and Light Magenta (Lc/Lm) configuration.

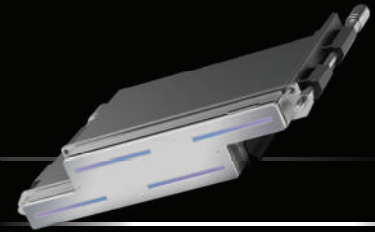




Featured printer is F10030.

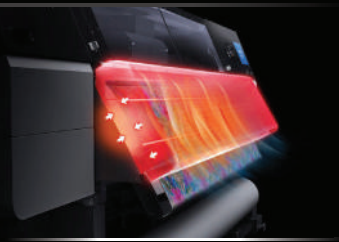
ENHANCED LEVEL OF PRODUCTIVITY

When it comes to textile printing, the ability for greater quality output in the shortest amount of time is integral, especially in high volume environments.



NEW PRECISIONCORE MICRO TFP PRINTHEADS

PrecisionCore represents Epson's TFP technology, created by merging advanced key component technologies and high-precision MEMS fabrication processes. Epson's SC-F10030 integrates **four** new 4.7-inch bandwidth PrecisionCore Micro TFP Printheads that allows for a larger printing area and a maximum print speed of 255 sqm/h. On the other hand, the SC-F10030H comes with **six** printheads with a maximum print speed of 246sqm/h. With a total of 3200 nozzles per head and a head resolution of 600dpi, delivering minute detail at incredible speed with unbeatable image quality is made possible.

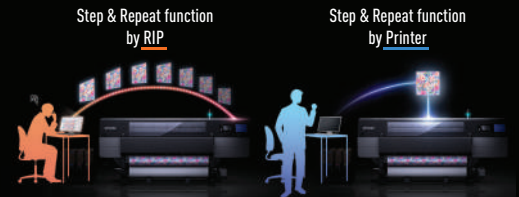


NEW AND IMPROVED INTEGRATED DRYER

Epson's SC-F10030/F10030H integrates a new dryer that empowers high-speed printing at a maximum temperature of 110°C. With understanding that unwanted ink transfer and wrinkling are common issues with regards to textile printing, the new dryer is designed to eliminate these worries. Paper surface temperature is controlled effectively by heating both frontside (heater with fan) and backside (heater) of the media.

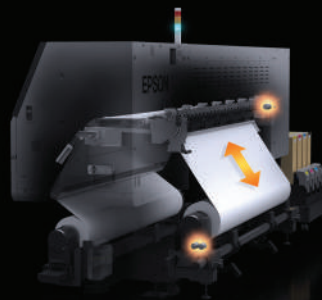
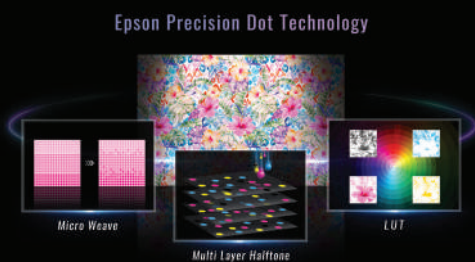
STEP AND REPEAT ON PRINTER

Say goodbye to the hassle of data spooling from your PC as Epson's SC-F10030/F10030H possesses the ability to perform step and repeat print independently. By simply selecting this function and setting the print size on a RIP software, users can now reduce file transfer time from PC to printer and enjoy step and repeat print effortlessly.



EXCELLENT AND INCREDIBLE PRINT QUALITY

Heavily reliant on visual aspects, print quality plays an important role when it comes to attracting and garnering attention from audiences.



EPSON PRECISION DOT TECHNOLOGY

Epson's Precision Dot Technology consist of three different dedicated technologies, namely Micro Weave, Lookup Table (LUT) and Halftone. By optimising the Micro Weave and LUT technology, as well as developing a new Halftone – Multi-layer Halftone, Epson's SC-F10030/F10030H realises higher printing robustness against dot placement error. When these three new technologies are harmonised, amazing image quality with reduced graininess and banding is achieved.

ADVANCED AUTO TENSION CONTROL

High paper feeding accuracy contributes to high print quality. Epson's SC-F10030/F10030H advanced auto tension control function enables accurate and stable media feeding across a variety of media. The media feed motor and roll drive motor synchronises to control paper feed accurately and stably. In this way, any negative effects caused by variance in media weight, roll core shape, diameter, tackiness and take-up reel operation status is reduced. Both paper feeding and printhead (dot placement and density) adjustments are available to users.

AUTO ADJUSTMENT CAPABILITY

The auto adjustment feature contributes to operation effectiveness by adjustments being done automatically via the RGB camera. It supports more stable print quality in accordance with the actual print pattern and less on manual adjustments where potentiality of errors and inaccuracy may be higher.



SURECOLOR SC-F10030/F10030H
TEXTILE DYE SUBLIMATION PRINTER

HIGH RELIABILITY AND UPTIME MAXIMISATION

Technical malfunctions and troubleshooting pose as common concerns. Designed for reliability, Epson's SC-F10030/F10030H gives users greater peace of mind. In the unlikely event of technical difficulties, repairing is made easy and intuitive, enabling users to solve the issue themselves for increased uptime.



BULK INK SUPPLY SYSTEM

Bulk ink supply system with 10L ink cartridges and hot swap function empowers continuous operation. Should an ink cartridge run out during printing, Epson's SC-F10030/F10030H automatically switches and activates another ink cartridge for uninterrupted printing. The finished ink cartridge can be easily replaced with a new one, all while the printer continues to print using the switched cartridge.



USER SELF-REPAIR FUNCTION

With Epson's first ever User Self-Repair function, specific parts such as the printhead and anti-drying cap can be replaced by users themselves, resulting in faster printer recovery and minimisation of downtime in comparison to waiting for service. The User Self-Repair function is supported by 3 components - Easy self-replaceable parts, Printer Diagnosis System and Epson's Remote Monitoring System.

EPSON CLOUD SOLUTION PORT

Epson Cloud Solution PORT is a cloud-based solution for Epson end users. This software provides users with the status of the connected printer and alerts for troubleshooting if required. The Production Monitor allows users to visualise printer operational status anytime, anywhere, from their PC or smart devices. In this way, productivity improves as users can identify the most urgent actions required and correct the issue efficiently with minimal disruption to the print run.



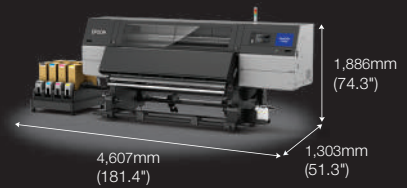
SPECIFICATIONS

Product Name	SC-F10030	SC-F10030H
Print		
Technology 1	PrecisionCore Inkjet Technology	
Technology 2	Variable-Sized Droplet Technology	
Printhead	PrecisionCore Micro TFP Printhead	
Nozzle Configuration	12,800 nozzles CMYK: 12,800 nozzles (3,200 nozzles x 4 colours)	19,200 nozzles CMYKLCm: 19,200 nozzles (3,200 nozzles x 6 colours) CMYKFPy: 19,200 nozzles (3,200 nozzles x 6 colours)
Maximum Resolution	1,200 x 1,200 dpi (With 300 x 300 dpi 16 Half Tone layers)	
Minimum Ink Droplet Volume	3.8 pl	
Print Speed	Maximum print speed of 255sqm/h	Maximum print speed of 246sqm/h
Margin (Roll paper)	7 mm (Right / Left), 5 mm (top), 5 mm (Bottom) (14 mm when using Media Holding Plates)	
Ink		
Ink Types	Dye Sublimation Transfer Ink	
Ink Brand Name	UltraChrome DS	
Colours	Cyan, Magenta, Yellow, High Density Black	Cyan, Magenta, Yellow, High Density Black, Light Cyan, Light Magenta / Cyan, Magenta, Yellow, High Density Black, Fluorescent Pink, Fluorescent Yellow
Ink Capacity	10,000 ml	
Ink Case	Ink cartridge	
Media Handling		
Paper Path	Friction Feed	
Maximum Diameter / Weight	Max. diameter 250 mm / 60 Kg (Roll) Max. diameter 250 mm / 60 Kg (Reel)	
Paper Width (Roll)	300 mm - 1,950 mm (Take-up reel support over than 914.4 mm)	
Paper Thickness (Roll)	up to 1 mm	
Roll Paper Remaining	The remaining amount is managed on control panel.	
Control Panel		
Colour/Size	9.0 inch Touch Panel	
Connectivity		
Interfaces	USB 3.0 1000Base-T	
Printer Language	ESC/P raster	
Memory	155GB	
Environmental Characteristics		
Temperature	Operating: 10°C - 35°C Storage (before unpacking): -20°C - 60°C 1 month at 40°C, 120 hours at 60°C Storage (after unpacking): -20°C - 40°C 1 month at 40°C	
Humidity	Operating: 20 - 80% (no condensation) Storage: 5 - 85% (no condensation)	
Dimensions & Weight		
Printing Dimensions (W x H x D)	4,607 x 1,886 x 1,303 mm	5,008 x 1,886 x 1,303 mm
Storage Dimensions (W x H x D)	4,607 x 1,886 x 1,303 mm	5,008 x 1,886 x 1,303 mm
Weight	Approx. 736 kg (Without ink cartridges)	Approx. 767 kg (Without ink cartridges)
Electrical Specification		
Voltage	AC200-240V x 2	
Rated Current	16A x 2	
Power Consumption		
Operating	Approx. 3.9 kW	Approx. 4.4kW
Ready / Sleep	Approx. 221 W	Approx. 230W
Power Off (Stand by)	Approx. 9.6 W	
Acoustic Noise Level		
Sound Pressure Level <db(A)>	Approx. 59 dB	
Utility Software		
Utility Software (Bundled in CD)	Windows only: CD: Epson Communication Driver, EpsonNet Print, EpsonNet Setup, EpsonNet Config SE, Epson Manual Launcher, User's Guide (Excerpt), Epson Software Updater, Installer Package DVD: Epson Edge Print	Windows only: Epson Communication Driver, Installer Package, Epson Software Updater, EpsonNet, PrintEpsonNet, SetupEpsonNet Config SE, Epson Manual Launcher, User's Guide (Excerpt), Epson Edge Print PRO
Utility Software (Web delivery)	Windows and Mac: Epson Communication Driver, Online Manual, Epson Video Manuals, User's Guide (Excerpt), Start-Up Guide, Epson Manual Launcher, Epson Control Dashboard, EpsonNet Setup, EpsonNet Config, EpsonNet Print, Software Updater, LFP Accounting Tool, Epson Control Dashboard	Windows only: Epson Communication Driver, EpsonNet Print, EpsonNet Setup, LFP Accounting Tool Windows and Mac: Epson Web Installer, Epson Software Updater, EpsonNet Config SE, Epson Edge Dashboard, Epson Manual Launcher, Online Manual, Epson Video Manuals, User's Guide (Excerpt), User's Guide, Network Guide, Start-Up Guide
System		
Win PC System Requirement	Macintosh Mac OS X(10.6.8 or later) CPU: Core 2 Duo 2.0GHz Memory: Memory more than 1GB HDD: Free space more than 500MB (For utility software, please refer to system requirement for each Utility software)	Windows PC System: CPU: Intel Corei3 3.0GHz or faster (released after April 2014) Memory: Memory more than 8GB HDD (Free space during installation: 50GB or more) Mac System Requirement: CPU: Multicore 3.0GHz Memory: Memory more than 4GB HDD: Free space more than 2GB
Warranty	1 Year Self-Repair Warranty*	

Dimensions & Weight

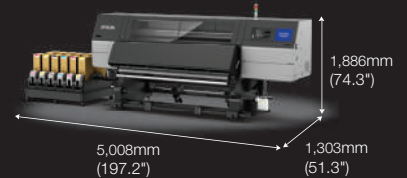
SC-F10030

Weight: 736 kg (Without ink cartridges)



SC-F10030H

Weight: 767 kg (Without ink cartridges)



Consumable

C13T43G100	UltraChrome DS High Density Black Ink (10L)
C13T43G200	UltraChrome DS Cyan Ink (10L)
C13T43G300	UltraChrome DS Magenta Ink (10L)
C13T43G400	UltraChrome DS Yellow Ink (10L)
C13T43G500	UltraChrome DS Light Cyan Ink (10L)
C13T43G600	UltraChrome DS Light Magenta Ink (10L)
C13T43G700	UltraChrome DS Fluorescent Yellow Ink (10L)
C13T43G800	UltraChrome DS Fluorescent Pink Ink (10L)
C12C933881	Take Up Media Holder
C12C933901	Take In Media Holder
C12C936031	Media Cleaner Brush
C12C936041	Presser Roller Spacer
C13S210103	Cleaning Kit
C13S210065	Wiper Roll
C13S210071	Waste Ink Bottle



©2021 Epson Singapore Pte Ltd. All Rights Reserved. Reproduction in part or in whole, without the written permission from Epson, is strictly prohibited. EPSON and EXCEED YOUR VISION are registered trademarks of Seiko Epson Corporation. All other product names and other company names used herein are for identification purposes only and are the trademarks or registered trademarks of their respective owners. Epson disclaims any and all rights in those marks. Print samples shown herein are simulations. The actual product design and contents may vary. Specifications are subject to change without notice and may vary between countries. Please check with local Epson offices for more information.

* Subject to relevant terms and conditions.

Information correct as at May 2021